



A SANCTUARY OF SPACE AND STYLE

Luxurious Owner's Suite: The staircase from the main floor leads up to an airy and light-filled 16.5x20' bedroom with a privacy hallway.

Spa-Like Bathroom: Double countertops and sinks, a free-standing soaking tub, a separate glass-enclosed rain shower with four jets and a hand shower, and a futuristic tankless smart toilet and bidet with auto flush and warm water.



- New Construction
- Oversized Rooms
- Stylish Finishes
- Thoughtful Design
- Finished Celler
- Private, Finished Roof
- Shaded Backyard

A GOURMET

A massive kitchen range, dual fuel, refrigerator, and a Mass backyard blend.

FLOOR PLAN

To view the floorplan of every floor, scan the QR Code. Additionally, you can insert and rearrange furniture with this interactive tool.



34 MADISON STREET

Two-Family Townhome

Represented by The Edry Team at Edry Williams New York City

HIP AND STYLISH WITH ROOM TO FLOW

This brand-new 20' wide, 2-family townhouse offers modern elegance with a spacious, open layout. Nestled at the convergence of Bedford Stuyvesant and Clinton Hill, this home is perfect for those seeking style, comfort, and airiness.

Expansive Living Space: Over 400 square feet of living area with picture windows overlooking the peaceful, leafy Madison Street.

Modern Design Elements: A Silver Branch Firefly Chandelier adds a modern touch, complemented by industrial dark metal window frames, doors, and rails.

High-End Finishes: Solid oak wood floors lead through a wide vestibule with a powder room and ample storage.



A VERSATILE SPACE TO MAKE YOUR OWN

Beyond the bathroom, find a massive room perfect for a private den, library, home office, dressing room, or even a fourth bedroom measuring 12.5x20'.

6 Bedrooms | 4 Bathrooms | 2 Half Bathrooms | T

MIDTOWN EAST COOPERATIVE

- ✓ Garage Parking (Wallist)
- ✓ Easy Subway Access (E, M, B)
- ✓ Laundry Room
- ✓ Bike Storage
- ✓ Landscaped Rooftop Garden
- ✓ 24-hour Doorman & Resident Manager

345 EAST 52ND ST UNIT 7B

\$399,000 | Studio | 1 Bath | 525 ft² | Turtle Bay



A SERENE RETREAT IN TURTLE BAY

Discover the perfect balance of comfort, convenience, and value in this bright and inviting alcove studio. Offering a spacious feel at an unbeatable price, this home is bathed in natural light and designed for effortless city living. An incredible opportunity to own in a prime Manhattan location—without the premium price tag.

- ✓ Parquet Floors
- ✓ Three spacious closets
- ✓ North-Facing Windows
- ✓ Alcove for Bed
- ✓ Dishwasher
- ✓ Garden Views

MAINTENANCE FEES: \$1,435 | REPRESENTED BY THE EDRY TEAM



Poosh Yadav
Broker
(347) 311-8888



Sandy Edry
Lic. RE Assistant
908-319-8888



REBNY



Edry Williams Realty, LLC is an Equal Opportunity and Fair Housing Company. We are proud to be a member of the National Association of Realtors (NAR) and the Real Estate Roundtable (RER).

175 12TH STREET UNIT 4B

\$950,000 | 1 Bed | 1 Bath | 776 ft² | Gowanus



TWO LEVELS. TWO TERRACES. ONE STANDOUT HOME.

A rare Brooklyn duplex with two private outdoor spaces and skyline views. The main level features a double-height living room with balcony, while upstairs offers a fully enclosed home office and private terrace overlooking Lower Manhattan and beyond. Thoughtful finishes include a marble bathroom, in-unit washer and dryer, and a modern kitchen with black granite countertops and stainless steel appliances.

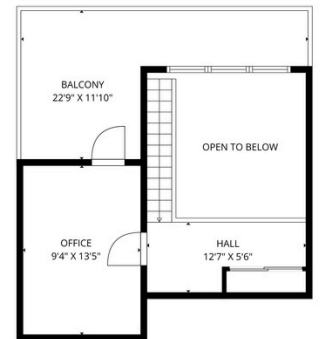
- ✓ Two Outdoor Spaces
- ✓ Unique Duplex
- ✓ Bonus Room/Office
- ✓ Split AC
- ✓ In-Unit Laundry
- ✓ Shower & Tub

BELVEDERE XXXVI

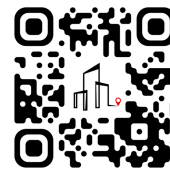
- ✓ Near F/G/R Subway Lines
- ✓ Easy Manhattan Access
- ✓ Boutique Condo Living
- ✓ Emerging Dining Scene
- ✓ Five Blocks to Prospect Park
- ✓ Whole Foods Nearby



1ST FLOOR



2ND FLOOR



To see a video tour of this amazing duplex, scan this code.



Isabella Italiano

Lic. RE Salesperson
516-640-0955



William Krooss-Tadas

Lic. RE Salesperson
631-827-1541



Sandy Edry

Lic. RE Salesperson
646-319-6606

The Edry Team

theedryteam.com


646-770-3379 | TheEdryTeam@kwnyc.com



Keller Williams NYC is a licensed Real Estate Brokerage in the State of New York. All information is from sources deemed reliable, however, no presentation is made to the accuracy of any of the information submitted. Not intended to solicit properties currently listed for sale or individuals currently under contract with brokerage.

GARDEN LEVEL BRINGS INCOME POTENTIAL

A separate street-level entrance leads to an open-concept 2-bedroom, 1-bathroom unit, ideal for rental income or family use. A finished recreation room in the basement serves as a playroom, home theater, guest quarters, and more. It even has a powder room.

For more information and to see the full digital brochure, including a 3D Tour, scan this QR code.



34 MADISON STREET



Reilly Burleigh-Andrews

Lic. RE Salesperson
360-310-6340



William Krooss-Tadas

Lic. RE Salesperson
631-827-1541



Sandy Edry

Lic. RE Salesperson
646-319-6606



646-770-3379
TheEdryTeam@kwnyc.com
TheEdryTeam.com



Two-Family Townhome

Represented by The Edry Team at Keller Williams New York City



HIP AND STYLISH WITH ROOM TO FLOW

This brand-new 20'-wide, 2-family townhouse offers modern elegance with a spacious, open layout. Nestled at the convergence of Bedford Stuyvesant and Clinton Hill, this home is perfect for those seeking style, comfort, and airiness.

Expansive Living Space: Over 400 square feet of living area with picture windows overlooking the peaceful, leafy Madison Street.

Modern Design Elements: A Silver Branch Firefly Chandelier adds a modern touch, complemented by industrial dark metal window frames, doors, and rails.

High-End Finishes: Solid oak wood floors lead through a wide vestibule with a powder room and ample storage.



A SANCTUARY OF SPACE AND STYLE

Luxurious Owner's Suite: The staircase from the main floor leads up to an airy and light-filled 16.5'x20' bedroom with a privacy hallway.

Spa-Like Bathroom: Double countertops and sinks, a free-standing soaking tub, a separate glass-enclosed rain shower with four jets and a hand shower, and a futuristic tankless smart toilet and bidet with auto flush and warm water.



- New Construction
- Oversized Rooms
- Stylish Finishes
- Thoughtful Design
- Finished Cellar
- Private, Finished Roof
- Shaded Backyard

FLOOR PLAN

To view the floorplan of every floor, scan the QR Code. Additionally, you can insert and rearrange furniture with this interactive feature.



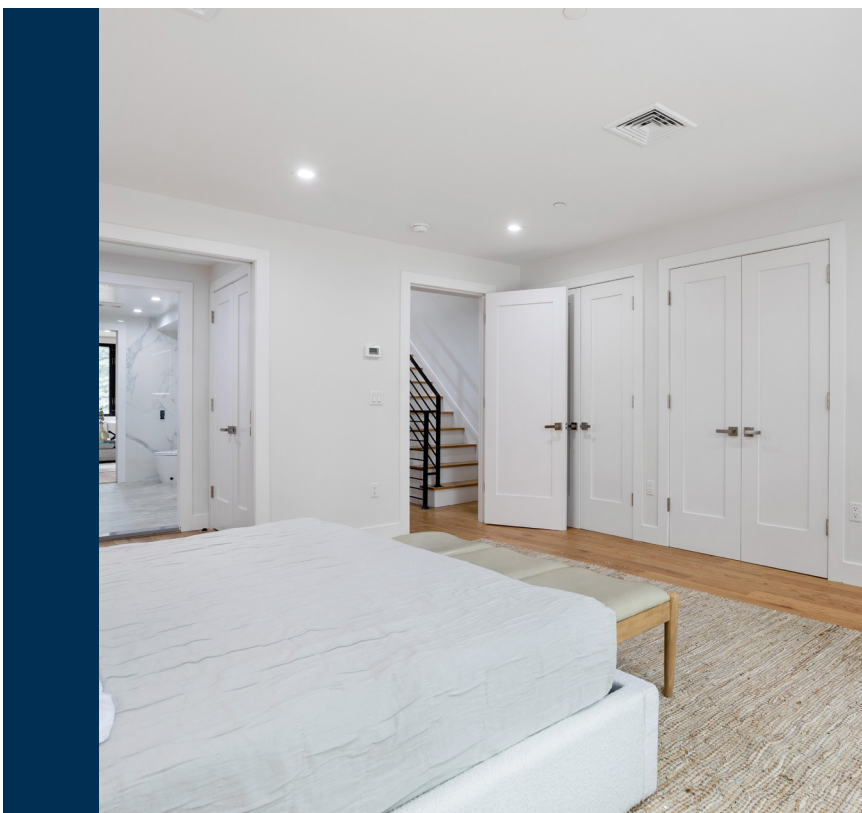
A GOURMET KITCHEN COMPLETE WITH OUTDOOR DINING

A massive kitchen and dining area feature a 7'7"x4'4" island. The Thermador appliance package includes a 6-burner range, dual fuel, true convection oven, non-stick griddle, vented hood, French door refrigerator, under-counter wine fridge, and a Masterpiece 11-mode oven. A six-pane metal and glass folding doors open to a terrace overlooking your backyard, blending indoor and outdoor living seamlessly.



A VERSATILE SPACE TO MAKE YOUR OWN

Beyond the bathroom, find a massive room perfect for a private den, library, home office, dressing room, or even a fourth bedroom measuring 12.5'x20'.



6 Bedrooms | 4 Bathrooms | 2 Half Bathrooms | Taxes: \$587 | 4884 Sq. Ft. | Bedford-Stuyvesant & Clinton Hill